

Complete Your  
Spirits Analysis



**Anton Paar**



# Anton Paar is the world's first full-range supplier for spirits analysis.

With 20+ laboratory and process instruments you can trace multiple parameters from any location in the plant. Streamlining your spirit's quality has never been so easy. The instruments are calibrated and adjusted at the push of a button. Global support and service are offered by local specialists. Take advantage of 20 years of expertise in the beverage industry.

Choose Anton Paar: [anton-paar.com/spirits](http://anton-paar.com/spirits)

- Laboratory measurement (incl. portable instruments)
- Process measurement

## Raw Material Monitoring

Refractive Index, Optical Rotation (°Z), Elemental Impurities



## Juice/Wort Monitoring

Density (°Brix, Extract, °Plato, SG), Refractive Index, Sound Velocity (Extract), Optical Rotation (°Z), pH, Turbidity



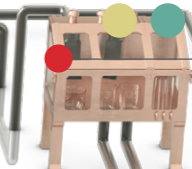
## Fermentation Monitoring

Density (°Brix, Extract, °Plato, SG), Refractive Index (Original Extract, Apparent Extract Density, Alcohol, Real Extract, Real Degree of Fermentation, Fermentation Speed), pH, Turbidity, Color



## Spirit Safe Monitoring

Density (Extract), Alcohol, pH, Color, Chemical Fingerprinting and Identification of Substances



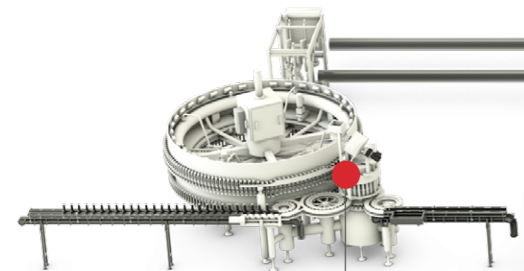
## Spirits Blending Monitoring

Density (Extract), Alcohol, pH, Color, Chemical Fingerprinting and Identification of Substances



## Bottling and Packaging

Density (Extract), Alcohol, Refractive Index, Optical Rotation (°Z), Turbidity, Color, pH



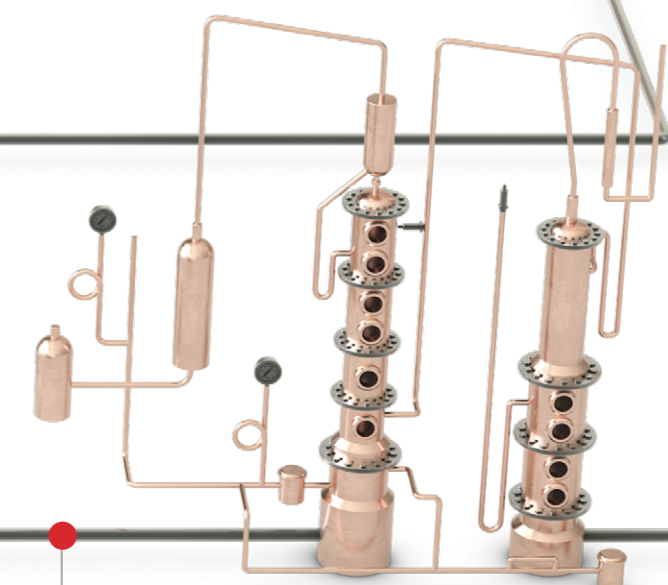
## Liqueurs Blending Monitoring

Density (Extract), Alcohol, Refractive Index, Optical Rotation (°Z), Turbidity, Color, pH



## Spirit Safe Monitoring

Density (Extract), Alcohol, pH, Color, Chemical Fingerprinting and Identification of Substances



This graphic is a generalized representation of the manufacturing process for clear spirits, whiskey, and liquors.

