



- CUSTOMER SUCCESS STORY -

**Carlos España, Head of Sample Preparation at the National Institute of Metrology's Inorganic Chemistry Laboratory, Bogotá, Colombia**

## Ensuring Accuracy at Colombia's National Institute of Metrology

*Colombia's National Institute of Metrology (INM) provides metrological services and coordinates scientific metrology activities for the country from its headquarters in Bogotá. With the goal of ensuring reliable measurements for export-oriented products, it supports industry, academia, and service labs throughout Colombia with training and technical assistance.*



Multiwave 5000



## Ensuring standards with Anton Paar

For products that conduct measurements to be used on the global market, they have to first fulfill the standards of various international organizations. Ensuring that they do is at the heart of what the INM does.

A lot of this happens at the sample preparation area of the INM's Inorganic Chemistry Laboratory, which is led by Carlos España. To pull this off, his lab verifies a range of reference material with the help of Anton Paar's microwave digestion platform.

## New challenges, new instruments

The INM had already been working with a Multiwave PRO for several years to measure cadmium in cocoa and mercury in fish flour. But while working with the United Nations Industrial Development Organization, the INM needed the capability to work on the chemical chain for things like cosmetics and plastics.

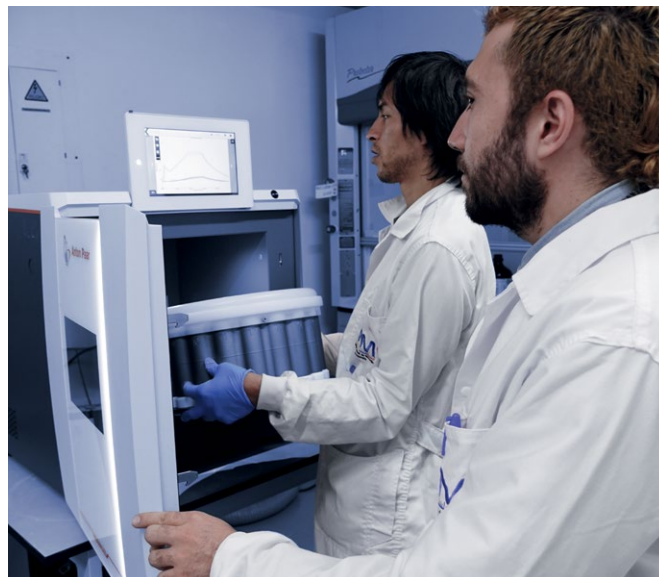
Since INM knew that the matrices for these kinds of chemical measurements were much more complex and had already had positive experiences with the Multiwave PRO, it decided to add a Multiwave 5000 to its portfolio. "We chose Anton Paar because the instruments always respond well in the test environment and its customer-friendly approach," remembers España.

With the new instrument, the institute could duplicate the number of samples it processed per day, meaning more products were ready for export that aligned with international standards and regulations.

“

*Starting with our interactions with the sales team, working with Anton Paar has always been easy. I'd give it a 10 out of 10.*

”



Placing the rotor in a Multiwave 5000

## Robust instruments worth the investment

The INM has been using Anton Paar instruments for almost a decade. “While Anton Paar instruments may be a bit more expensive than other brands, they’re worth the investment,” says España. “We had a Multiwave PRO that worked for eight years with no issues. It’s currently being serviced, and we hope to have this back working soon.”

The institute has also had good experiences with Anton Paar’s service and support teams. “Starting with our interactions with the sales team, working with Anton Paar has always been easy,” explains España. “I’d give it a 10 out of 10.”

### Main points at a glance

**INSTRUMENT:** Multiwave 5000

**SAMPLES:** Cosmetics, plastics

**MEASUREMENT PRINCIPLE:**

Multiwave 5000 conducts digestion of all kinds of samples (varying in difficulty or volume), acid leaching, microwave solvent extraction, evaporation, microwave-induced oxygen combustion, sample drying, and synthesis.