



Software for  
Rheometers

# New Paths for Your Applications

## The RheoCompass™ Software

Your rheometer opens up a constantly growing number of measurement opportunities. This calls for a navigation tool that gives you the complete overview as well as the exact insights you require: Anton Paar's new RheoCompass™ software.

Designed for intuitive use, the client and server based RheoCompass™ enables application-oriented template filtering, customized test and analysis definitions, highly simplified data retrieval and much more.



App Manager  
Rheology your way

RheoFinder  
All data at  
your fingertips

Media Explorer  
Picture-perfect  
measurement  
visualization

Analysis Designer  
Create your own  
analysis macros

Test Designer  
Your guide to  
test definitions

Report Designer  
The documentation  
your results deserve

Presentation  
Outstanding diagrams  
simply generated



# The Tools for Your Applications

## App Manager

Rheology your way

The App Manager presents you with a comprehensive range of application options – arranged for fast and easy selection. Use the App Manager to find the template that best suits your needs. Simply filter the wide number of available templates by application, rheological test type, material property – or a combination of these.

This tool is not limited to predetermined Anton Paar apps, but can also be used to arrange user defined templates and projects in the same style at the "My Apps" page. Bottom line: The App Manager finds the perfect template for your application – based on your individual input.



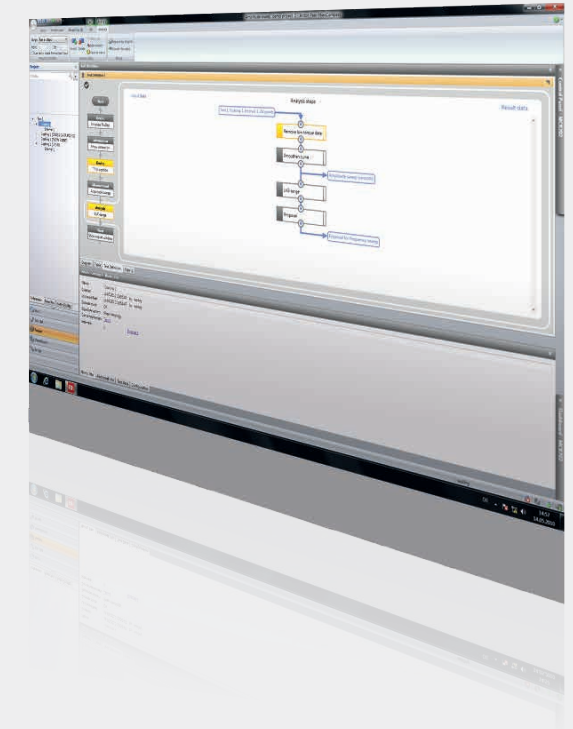
## Analysis Designer

Create your own analysis macros

The software's Analysis Designer includes rheological standard analysis methods as well as curve sketching and advanced oscillatory analysis methods, e.g. the Time-Temperature Superposition.

You can also create, save and select your own analysis macros. Analyses are either started by selection of data points in the diagram or by manual selection of stored test results.

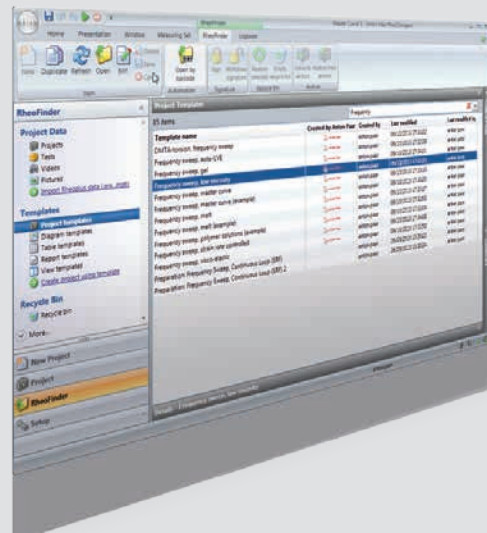
For QC automation, an analysis procedure such as the Casson regression can be included in the test definition of the workflow – the analysis result is automatically embedded in the measuring report.



## RheoFinder

All data at your fingertips

With the RheoFinder, managing and retrieving your measuring data and templates in the database is as easy as generating them. Easily defined filters – e.g. by year, batch number, operator – display the data you are looking for within seconds. The RheoFinder comes with full instant search functionality. Share your data with other RheoCompass™ users via XML-based files – the software's exchange format. Since RheoCompass™ can also be installed as a multi-client server version, data from several rheometer workstations can be saved in one single database on your company network.

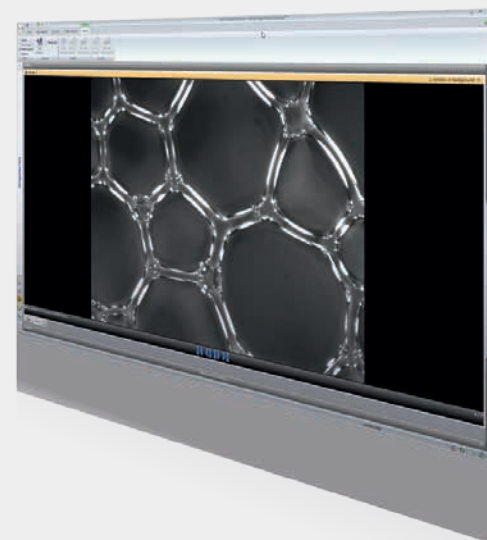


## Media Explorer

Picture-perfect measurement visualization

The Media Explorer manages and displays pictures or video sequences filmed by connected cameras such as the Digital Eye. You are also given the option of simultaneous video recording with multiple cameras, e.g. for flow visualization, with two cameras filming the sheared sample from below and from the side.

Pictures and video sequences are optionally displayed directly in the diagram, assigned to the measuring points at which they were recorded.



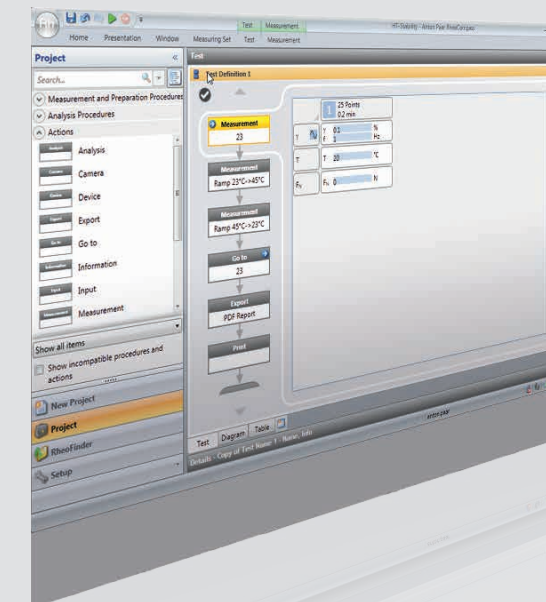
## Test Designer

Your guide to test definitions

Define the test you want – let the Test Designer guide you through your experiment with optional text, audio and video instructions.

Test definitions are flexibly and easily assembled by dragging and dropping a variety of 'actions' into workflows, covering all test steps from sample preparation and measurement to analysis, post-processing and printouts. Use or adapt the predetermined test definitions or create your own.

In the measurement action, various measuring profiles can be combined – incrementally and in real time. This gives you complete flexibility for defining new, presently unknown measuring profiles.



# The Tools for Your Applications

# Features at a Glance

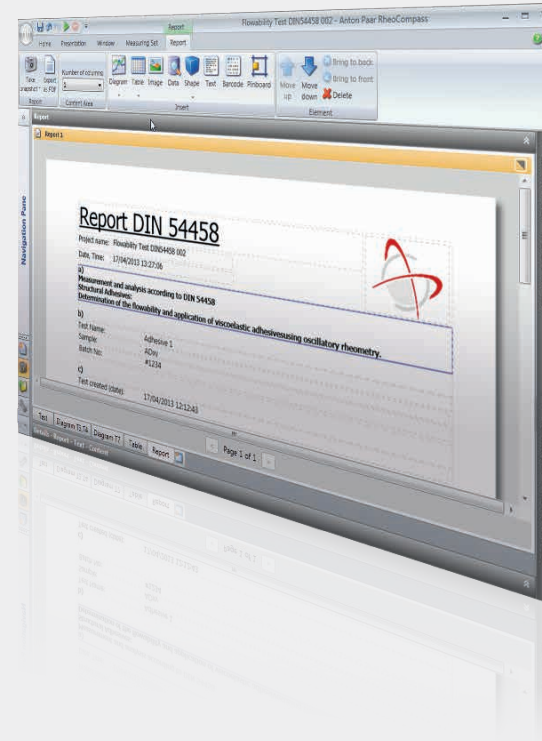
## Report Designer

The documentation your results deserve

Use the Report Designer to generate comprehensive measuring reports in a flexible fashion. Share your reports with other users in standardized formats such as XPS or PDF.

All test information and visual aids such as tables, diagrams, individual text fields and bitmaps (e.g. company logos) can be positioned as you wish, to create the report you are looking for.

For sample identification, database entries such as sample name and batch number are optionally displayed as bar codes.



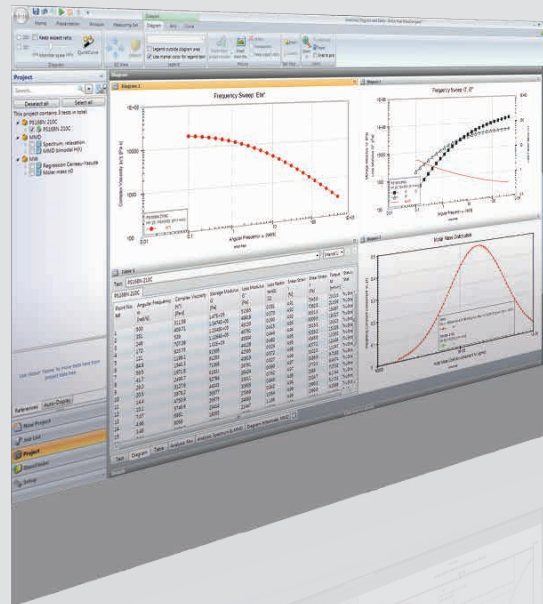
## Presentation

Outstanding diagrams – simply generated

RheoCompass™ offers you unprecedented presentation options. With the Quick Curve function, you can generate comprehensive and attractive diagrams at the push of a button.

Many functions are available for simplified work with your measuring data:

- ▶ Zoom function
- ▶ Recorded pictures can be assigned to measuring points
- ▶ Direct analysis of presented measuring data by selection in diagram
- ▶ Automatic scaling during measurement
- ▶ Any number of curves and axes available
- ▶ Free placement and in-place editing of all elements (text, picture, logo)
- ▶ Measuring point values optionally presented as coordinates



	Light	Professional
<b>Outstanding features</b>		
<b>Templates and data</b>		
App Manager	✓	✓
RheoFinder <sup>(1)</sup>	✓	✓
Test Designer	✓	✓
Macro Designer	✓	✓
Information via video/audio	✓	✓
Report Designer	✓	✓
Media Explorer	✗	○
<b>Quality Management (QM)</b>		
Login	✓	✓
User roles	✓	✓
Event logging	✓	✓
Approval of templates	✓	✓
Advanced Quality Management <sup>(2)</sup>	✗	○
<b>Data safety</b>		
Backup, restore	✓	✓
Archiving	✓	✓
<b>Shared data</b>		
Devices in license	1 RheolabQC or 1 MCR 72/92 <sup>(3)</sup>	multiple devices
Single lab, 1 computer	✓	✓
Shared lab, 2 computers <sup>(4)</sup>	✗	✓
Managed lab, multiple clients and server <sup>(5)</sup>	✗	○
<b>Interface</b>		
Export to PDF, XML, ASCII	✓	✓
Trigger by analog signal	✓	✓
<b>Scientific</b>		
Actuator, sensor and transient data <sup>(6)</sup>	✗	○
TwinDrive variables	✗	○

<sup>(1)</sup> RheoFinder is based on Microsoft SQL technology

<sup>(2)</sup> Features and settings to use RheoCompass™ under QM regulations like GLP / GMP or 21 CFR Part 11 e.g. complete Audit Trail & Electronic Signature

<sup>(3)</sup> For RheolabQC, MCR 52, MCR 72 and MCR 92 only

<sup>(4)</sup> Two computers are connected to a database at the same time

<sup>(5)</sup> Several measuring sets (computers with MCR in the lab) connected to a central database (a computer specified as server)

<sup>(6)</sup> Transient data: Including waveforms, Lissajous, Fourier coefficients, Chebyshev coefficients, intra-cycle variables

### RheoCompass™ is compatible with:

- Microsoft Windows 7-SP1 (64bit)
- Microsoft Windows 8 (64bit)
- Microsoft Windows 8.1 (64bit)
- Microsoft Windows 10 (64bit)

### Recommended hardware:

- Intel™ i5, 2.67 GHz or higher
- 8 GB RAM or more
- SSD 240 GB or more
- Microsoft Windows 10 (64bit)

### Available languages:

- English
- German
- Chinese
- Japanese
- French

