



Table of Contents

1	Setting up OKI C332dn (mat. no. 184714).....	1
1.1	PMA 5 or CLA 5.....	1
1.2	PNR 12.....	2
1.3	RKA 5.....	3



Fig. 1 OKI C332dn color laser printer

1 Setting up OKI C332dn (mat. no. 184714)

This document describes how to set up the OKI C332dn color laser printer with your Anton Paar devices. Please follow the instructions below for your respective device.

1.1 PMA 5 or CLA 5

To install the OKI C332dn color laser printer with the PMA 5 or CLA 5 follow these steps.

1. Unpack the printer and the cables.
2. Connect the power cable.
3. Connect the USB cable with the printer and one of the USB sockets of the PMA 5 or CLA 5.
4. Switch on the printer.
5. Select "**Config & Service**" and press OK, without entering any access code.
6. Press button "**Extended**" and scroll down to "**Data transfer**".
7. Set "**Printer result**" to "**long result**" and "**Printer**" to "**Laser**".

Product Information

Setting up OKI C332dn Color Laser Printer

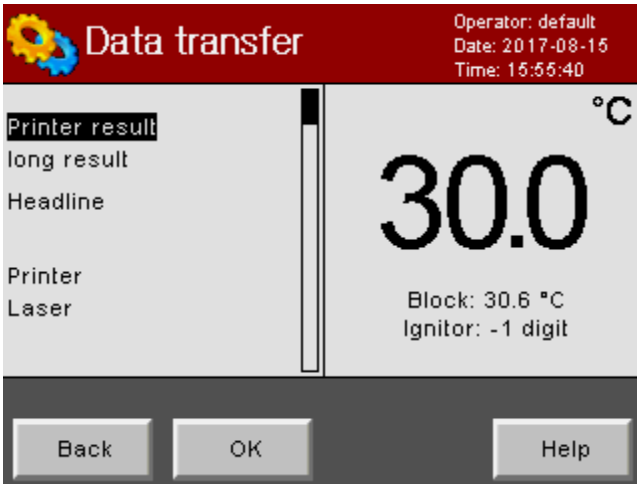


Fig. 2 – "Data transfer" screen

8. Scroll down and in the same menu set **"Printer connection"** to **"USB"**.

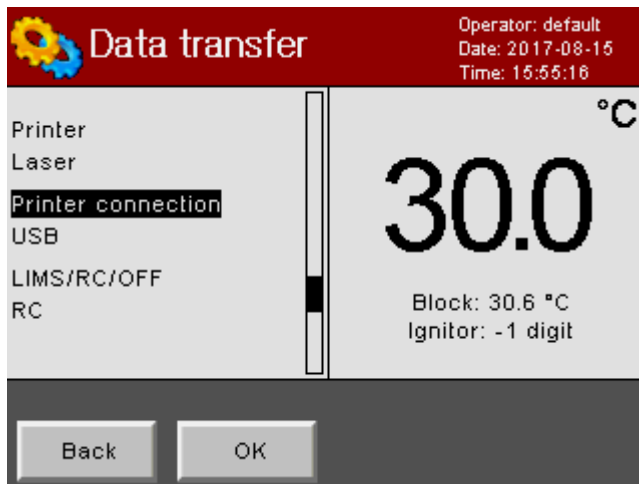


Fig. 3 – Setting Printer connection to USB

9. Press the **"OK"** button.
10. The printer is ready for use.

1.2 PNR 12

To install the OKI C332dn color laser printer with the PNR 12 follow these steps.

1. Unpack the printer and the cables.
2. Connect the power cable.
3. Connect the USB cable with the printer and the PNR 12.
4. Switch on the printer.
5. The printer is ready for use. There are no special settings required.

1.3 RKA 5

To install the OKI C332dn color laser printer with the RKA 5 follow these steps.

1. Unpack the printer and the cables.
2. Connect the power cable.
3. Connect the USB cable with the printer and the RKA 5.
4. Switch on the printer.
5. Use the jog wheel to navigate to "**Setup > Interfaces > Printer**".



Fig. 4 – Select "Setup"



Fig. 5 - Select "Interfaces"

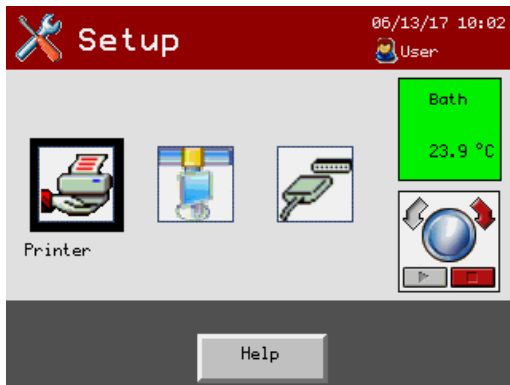


Fig. 6 – Select "Printer"

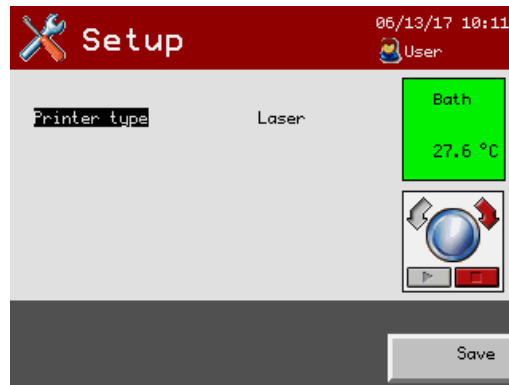


Fig. 7 – Select "Laser" as printer type

6. Choose the printer type "**Laser**" and click on the <Save> button. There is no confirmation that the data was saved.
7. Click <Back> and check again that printer type is indeed "**Laser**".
8. Now you can use the printer with the RKA 5.

Contact us at

Anton Paar ProveTec GmbH

Ludwig-Erhard-Ring 13
15827 Blankenfelde-Mahlow – Germany

Phone: +49 (0)33708 56-300

Fax: +49 (0)33708 56-556

E-Mail: info.provetec@anton-paar.com

Website: www.anton-paar.com