



Table of Contents

1	Setting up HP Laserjet Pro M402d (mat. no. 180816)	1
1.1	ADU 5	1
1.2	Callisto 100	3
1.3	PNR 12	3
1.4	RKA 5	4

1 Setting up HP Laserjet Pro M402d (mat. no. 180816)

This document describes how to set up the HP Laserjet Pro M402d printer with your Anton Paar devices. Please follow the instructions below for your respective device.

1.1 ADU 5

To install the HP Laserjet Pro M402d printer with the ADU 5 follow these steps.

1. Unpack the printer and the cables.
2. Connect the power cable.
3. Connect the USB cable with the printer and one of the USB sockets of the ADU 5.
4. Switch on the printer.
5. On the ADU 5 tap <Menu>.
6. Select "**Setup > Control Panel > Printer Management**".



Fig. 1 – "Printer Management" screen

7. Tap <More> and <New>. The printer definition screen opens.

Product Information

Setting up HP Laserjet Pro M402d

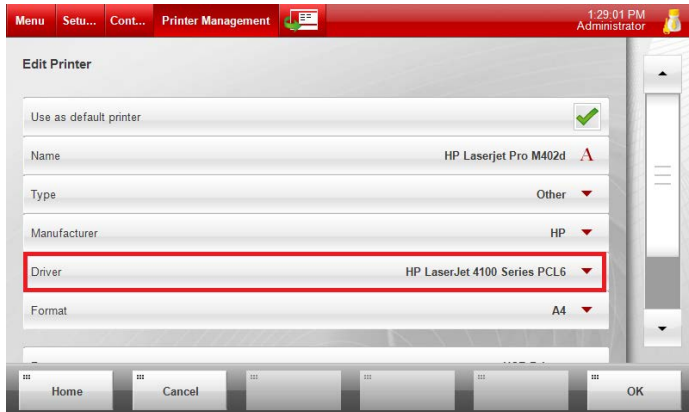


Fig. 2 – Selecting the correct driver

8. Activate the check box **"Use as default printer"** if you wish to use this printer by default. Otherwise leave the check box empty.
9. Enter a **"Name"** for the printer.
10. For **"Type"** select **"Other"**.
11. For **"Manufacturer"** select **"HP"**.
12. For **"Driver"** select **"Laserjet 4100 Series PCL 6"**. Leave all other settings as they are.
13. Confirm the settings with <OK>. The printer driver will be installed. The new printer will be inserted into the **"Printer Management"** list.

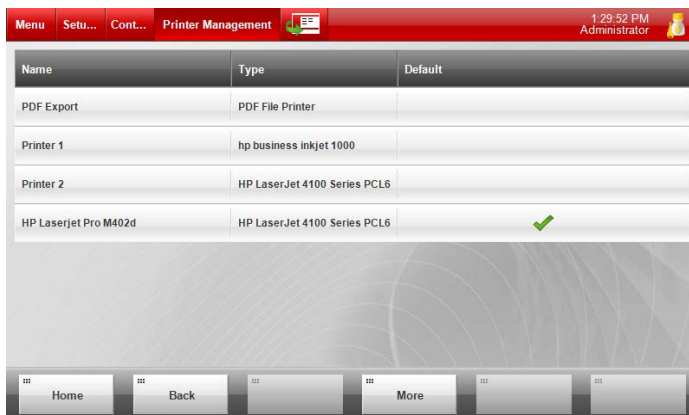


Fig. 3 – The new printer is inserted into the printer list and available for printing

1.2 Callisto 100

To install the HP Laserjet Pro M402d printer with the Callisto 100 follow these steps.

1. Unpack the printer and the cables.
2. Connect the power cable.
3. Connect the USB cable with the printer and one of the USB sockets of the Callisto 100.
4. Switch on the printer.
5. On the Callisto 100 tap <Menu>.
6. Select **"Setup > Control Panel > Printer Management"**.
7. Click on the button <More> and choose <New>.



Fig. 4 – Select <New>

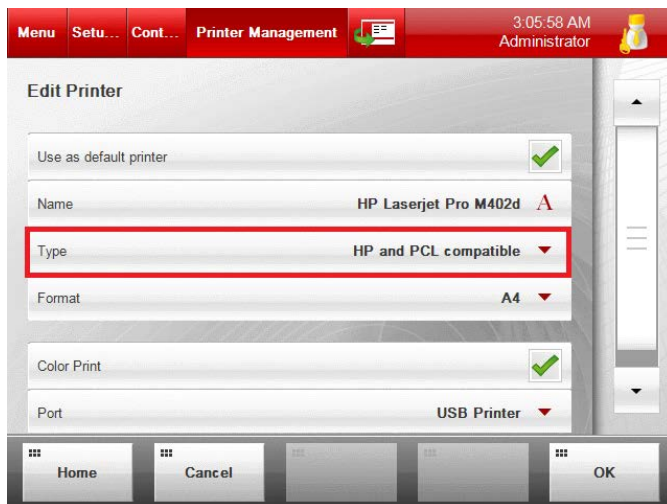


Fig. 5 – Selecting the printer type

8. Enter a name for the printer
9. From the **"Type"** dropdown select **"HP and PCL compatible"**.
10. Leave all other settings as they are and click <OK>.
11. Now the printer is set up in the Callisto 100 and available for printing.

1.3 PNR 12

To install the HP Laserjet Pro M402d printer with the PNR 12 follow these steps.

1. Unpack the printer and the cables.
2. Connect the power cable.
3. Connect the USB cable with the printer and the PNR 12.
4. Switch on the printer.
5. The printer is ready for use. There are no special settings required.

1.4 RKA 5

To install the HP Laserjet Pro M402d printer with the RKA 5 follow these steps.

1. Unpack the printer and the cables.
2. Connect the power cable.
3. Connect the USB cable with the printer and the RKA 5.
4. Switch on the printer.
5. Use the jog wheel to navigate to "**Setup > Interfaces > Printer**".



Fig. 6 – Select "Setup"



Fig. 7 - Select "Interfaces"



Fig. 8 – Select "Printer"

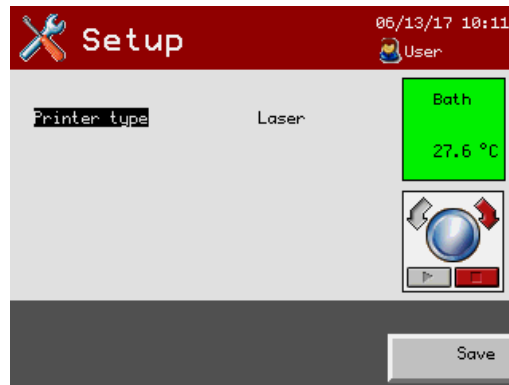


Fig. 9 – Select "Laser" as printer type

6. Choose the printer type "**Laser**" and click on the <Save> button. There is no confirmation that the data was saved.
7. Click <Back> and check again that printer type is indeed "**Laser**".
8. Now you can use the printer with the RKA 5.

Contact us at

Anton Paar ProveTec GmbH

Ludwig-Erhard-Ring 13
15827 Blankenfelde-Mahlow – Germany

Phone: +49 (0)33708 56-300

Fax: +49 (0)33708 56-556

E-Mail: info.provetec@anton-paar.com

Website: www.anton-paar.com