



Callisto 100

Cold Filter Plugging Point Tester

Callisto 100 Cold Filter Plugging Point Tester

The fully automated and compact CFPP tester Callisto 100 determines the low-temperature operability in diesel fuel, biodiesel, diesel blends and gas oils.

Callisto 100 comes with a newly developed state-of-the-art Peltier element concept which allows the connection of a methanol-free cooling system. It ensures outstanding homogeneity of the cooling jacket, which is the most critical and decisive parameter for a correct CFPP value determination.

Benefits at a Glance

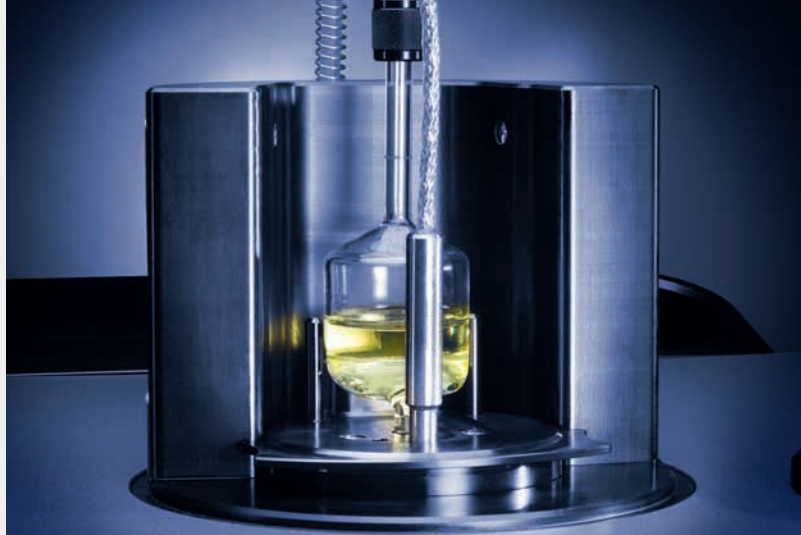
- Error-free detection
- Easy and intuitive operation
- High sample throughput
- Convenient cleaning routines

Convenient Operation

- Thanks to contact-free infrared detection technology the complete filtration unit is easily accessible
- Excellent detection, even when the pipette is frosted
- Pre-programmed standard test methods to select from the menu allow for immediate start of the test
- Large color display indicates the sample and jacket temperature in real time
- Graphical information about the aspiration and flow back times to observe the temperature behavior of the sample
- Statistical evaluation of test results according to the test method
- User-friendly calibration procedures for the temperature and vacuum
- Automated pre-cleaning routine

Customized User Flexibility

- Also applicable for manual cloud and pour point measurements (complete test kit optionally available)



Standard Methods

ASTM D6371, EN 116, EN 16329, JIS K 2288, IP 309

With optional kit for manual cloud and pour point measurement:

ASTM D2500, ISO 3015, EN 23015, JIS K 2601, IP 219 (cloud point)

ASTM D97, ASTM D5853, ISO 3016, JIS K 2269, IP 15, IP 441 (pour point)

Technical Specifications

Measuring range	-60 °C to 45 °C
Cooling profiles	Programmable stepped or linear (from 6 °C/h to 100 °C/h)
Calibration	Automatic calibration routine for sample and jacket temperature and vacuum measurement Temperature probe correction table
External cooling units	User-supplied or available from Anton Paar as an accessory Cooling power: 280 W at -20 °C
Data memory	1000 results 90 user-defined programs
Data export	Connectivity via USB and LAN, e.g. to export test results as XLS or PDF files
Interfaces	4x USB, 1x RS232, 1x LAN, 1x VGA
Power supply	AC 100 V to 240 V, 50 Hz/60 Hz, 290 VA
Dimensions	340 mm x 580 mm x 310 mm (W x D x H)
Weight	14 kg
Resolution	0.1 °C

Your distributor: